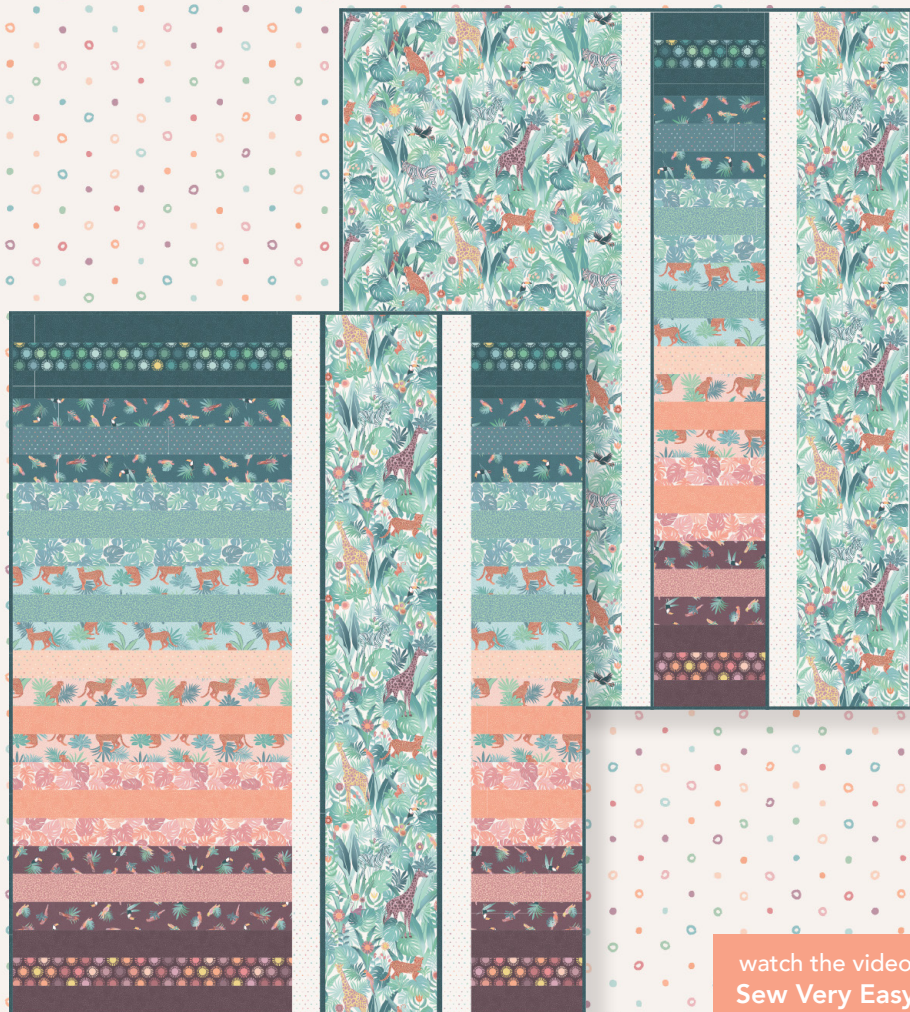


MAYWOOD  STUDIO

# parfait quilt



watch the video  
Sew Very Easy



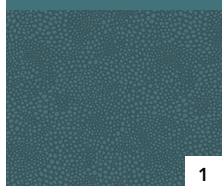
**Parfait Quilt - Two in One!**  
**41" x 50"**

Featuring the Wild Side Fabric Collection  
2½" Strip-Friendly

[maywoodstudio.com](http://maywoodstudio.com)



## FABRICS USED IN THE WILD SIDE PARFAIT QUILT



1

10707-Q + binding



2

10704-Q



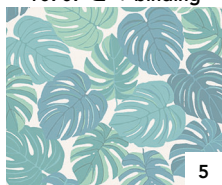
3

10702-Q



4

10706-Q



5

10703-GQ



6

10705-GQ



7

10701-Q



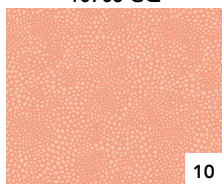
8

10706-C



9

10700-EZ



10

10707-O



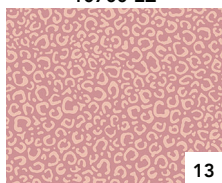
11

10703-CP



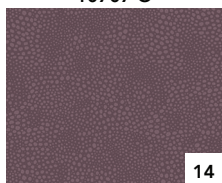
12

10702-M



13

10705-CP



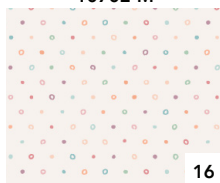
14

10707-M



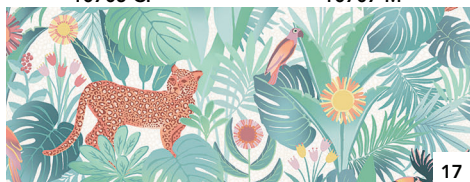
15

10704-M



16

10706-E



17

10700-EZ

WOF - Width of Fabric  
LOF - Length of Fabric  
RST - Right Sides Together  
HST - Half Square Triangle

FABRIC REQUIREMENTS		
Fabric 1	2 WOF Strips	or 1/4 yard
	Flanges	1/4 yard
	Binding *see below	3/8 yard each
Fabrics 3, 5, 6, 7, 9, 10, 11, 12, 14	2 WOF Strips each	or 1/4 yard
F2, 4, 8, 13, 15	1 WOF Strip each	or 1/8 yard
F16	Sashing	1/2
F17	Background	1-1/2 yards
Borders for Reversible Version	see p.7 *this is only for reversible version. We used F6	1-1/2 yards
Backing	*see below	3-1/2 yards each OR 1-1/2 yards for borders

**STRIPS:** There are 25 strips used in the Parfait Quilt. For the version on the cover, we have used 15 different fabics in our layout. Follow our illustrations or arrange the fabrics to your liking.

**BACKING:**

You will need 3-1/2 yards for each quilt for the backing. For a reversible quilt you will only need 1-1/2 yards to add the borders shown on p.7.

**BINDING:**

One Quilt: You need 3/8 yard for the binding  
Two Quilts: You need 3/4 yard: 3/8 yard for each quilt.

CUTTING

**Fabric \*1,**  
Cut (4) 2-1/2" x WOF strips  
Flanges: Cut (6) 1" x WOF strip  
**Binding:** Cut (5) 2-1/2" x WOF strips for each quilt.  
**Note:** you will need (10) 2-1/2" x WOF strips if you are making two quilts, and (5) if you are making one reversible quilt.

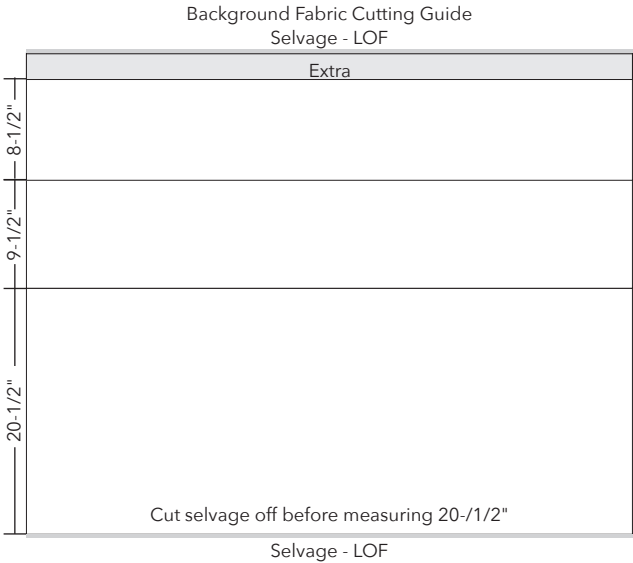
**Cutting for the strips if you are using yardage:**  
**Fabrics 3, 6**  
Cut (2) 2-1/2" x WOF strips

**Fabrics 3, 5, 6, 7, 9, 10, 11, 12,14**  
Cut (2) 2-1/2" x WOF strips

**Fabrics 2, 8, 13, 15**  
Cut (1) 2-1/2" x WOF strip

**Fabric 16**  
Sashing: Cut (6) 2-1/2" x WOF strip

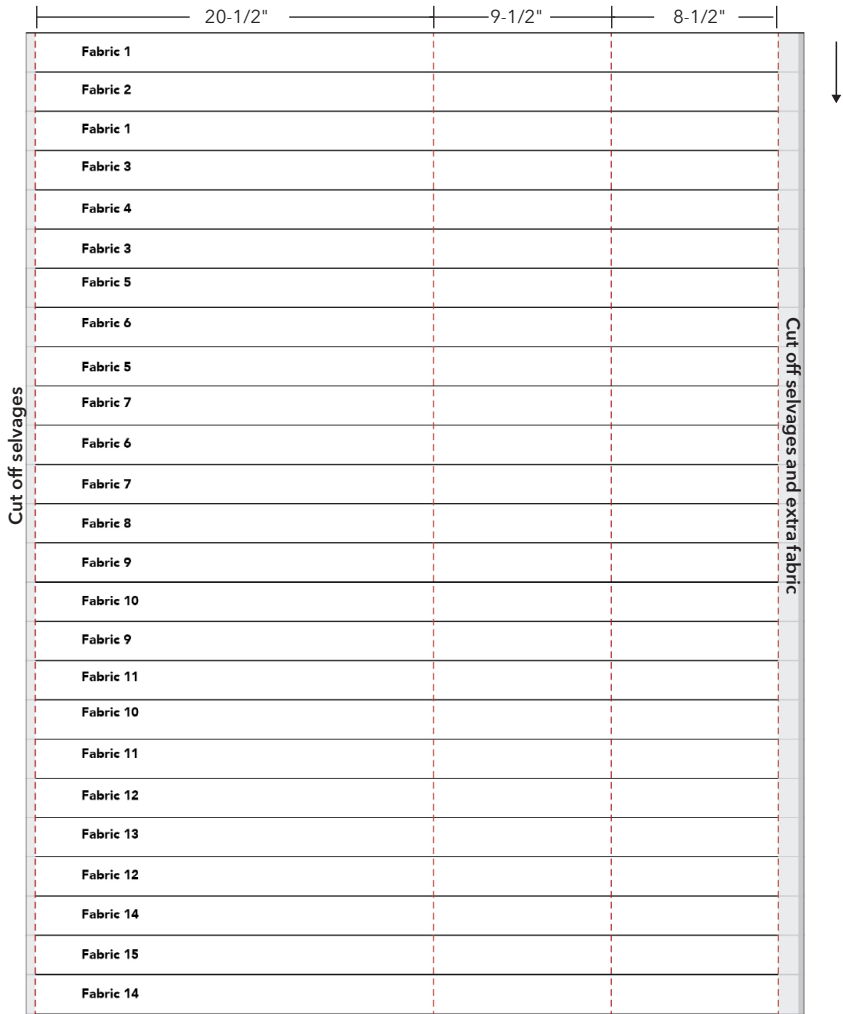
**Fabric 17** \*See cutting guide below  
Cut the following pieces along the LOF (Length of Fabric)  
(1) 20-1/2" x 50-1/2"  
(1) 9-1/2" x 50-1/2"  
(1) 8-1/2" x 50-1/2"  
\*Line this up with the selvage as illustrated below.  
There will be a small amount of extra left over.



Please read all instructions before you begin. Seam allowance is 1/4". Fabric is abbreviated as F and by number. For example, Fabric 1 is 'F1'. Press seams in the direction of the arrows.

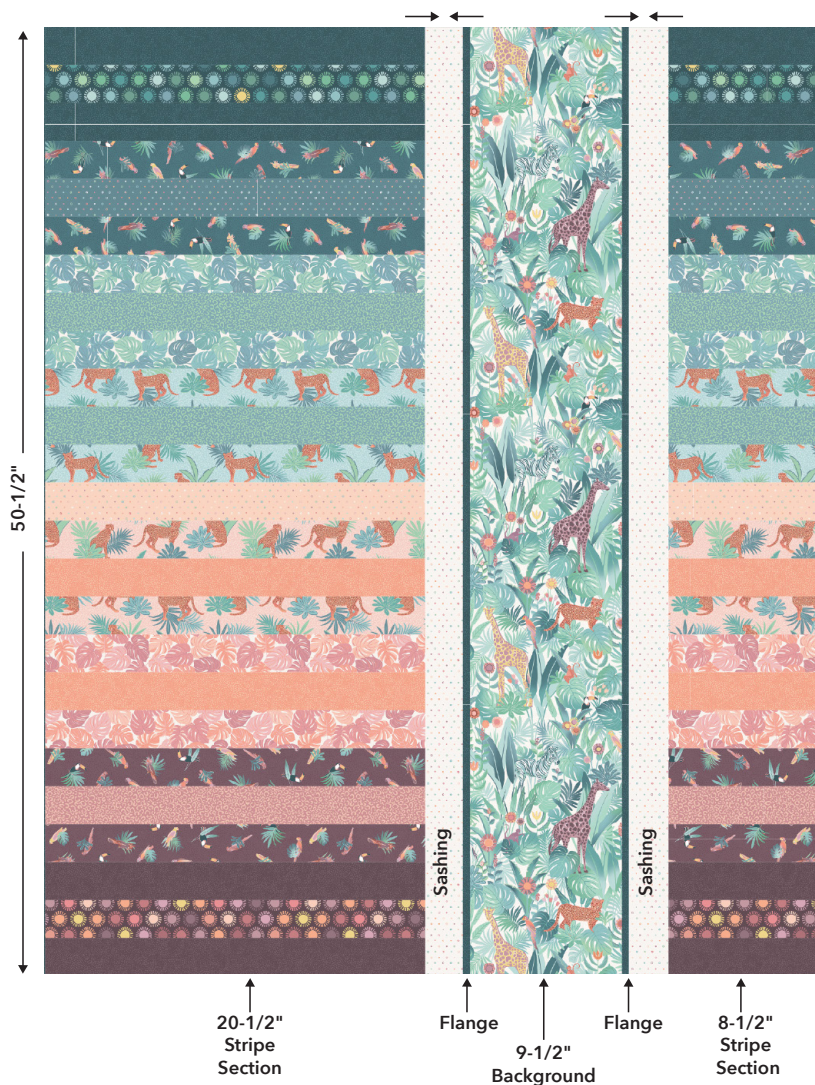
Sew the Strips Together

- 1. Arrange the strips as illustrated below. Sew along the long ends. Press in one direction.
  - 2. Mark and cut the strips into 3 sections. Remove the selvage before marking.
- The sections are: 20-1/2" - 9-1/2" - 8-1/2" x the length of the sewn strips.



## Quilt Top 1

1. Sew the F1 flange strips together end to end. Press in half length-wise. Cut into (4) 50-1/2" strips.
2. Matching the raw edges with the folded edge toward the center and baste a flange strip to either side of the 9-1/2" background section.
3. Sew (6) F16 sashing strips together end to end. Cut into (4) 2-1/2" x 50-1/2" lengths.
4. Sew a sashing strip to either side of the background section, sandwiching the flange, and matching the raw edges. Press the flanges and the sashing away from the background section.
4. Sew the 20-1/2' and 8-1/2" stripe sections to either side of the step 4 section referring to the illustration below. Press in the direction of the arrows.



**Quilt Top 2**

- 1. Match the raw edges with the folded edge toward the center and baste a flange strip to either side of the 9-1/2" stripe section.
- 2. Sew an F14 sashing strip to either side of the step one section, matching the raw edges. Press the flanges and the sashing away from the stripe section.
- 4. Sew the remaining background sections to either side of the step 2 section, referring to the illustration below. Press in the direction of the arrows.



## Finishing for two separate quilts

1. Layer the backing (wrong side up), batting and quilt top (right side up). Baste layers to secure. Quilt as desired. Trim the excess backing and batting.
2. Sew the binding strips together into one continuous strip. Press in half length-wise. Sew the binding to the quilt top with a  $\frac{1}{4}$ " seam allowance. Turn the binding to the back side of the quilt and stitch down by hand with matching thread.

## Finishing for a reversible quilt (illustrated below):

Cut the following borders LOF. You will need 1-1/2 yards of additional border fabric. The illustration below shows a version using F6.

### Quilt Top 1

1. Sew a  $3\text{-}\frac{1}{2}$ " x  $50\text{-}\frac{1}{2}$ " F6 border to the sides of Quilt Top 1.
2. Sew a  $3\text{-}\frac{1}{2}$ " x  $47\text{-}\frac{1}{2}$ " F6 border to the top and bottom of Quilt Top 1.

### Quilt Top 2

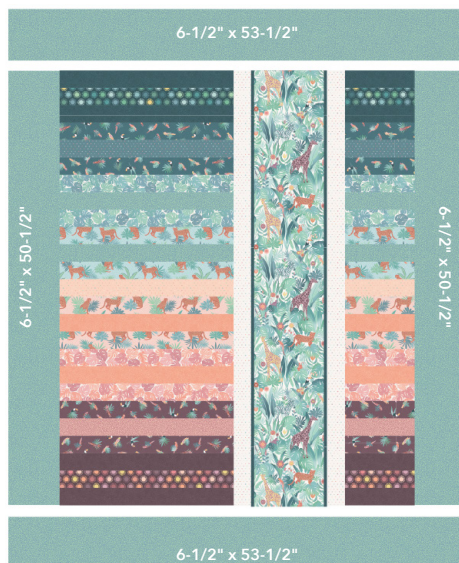
3. Sew a  $6\text{-}\frac{1}{2}$ " x  $50\text{-}\frac{1}{2}$ " F6 border to the sides of Quilt Top 2.
4. Sew a  $6\text{-}\frac{1}{2}$ " x  $53\text{-}\frac{1}{2}$ " F6 border to the top and bottom of Quilt Top 2.

## Adding Borders for reversible version

Quilt Top 1



Quilt Top 2



5. Make your quilt sandwich using the larger Quilt Top 2 as the backing, trim the excess backing and batting, quilt as desired, and then add the binding.

## Quilt Planning Diagram Use this template to plan your quilt

Fabric 1	Fabric 1
Fabric 2	Fabric 2
Fabric 1	Fabric 1
Fabric 3	Fabric 3
Fabric 4	Fabric 4
Fabric 3	Fabric 3
Fabric 5	Fabric 5
Fabric 6	Fabric 6
Fabric 5	Fabric 5
Fabric 7	Fabric 7
Fabric 6	Fabric 6
Fabric 7	Fabric 7
Fabric 8	Fabric 8
Fabric 9	Fabric 9
Fabric 10	Fabric 10
Fabric 9	Fabric 9
Fabric 11	Fabric 11
Fabric 10	Fabric 10
Fabric 11	Fabric 11
Fabric 12	Fabric 12
Fabric 13	Fabric 13
Fabric 12	Fabric 12
Fabric 14	Fabric 14
Fabric 15	Fabric 15
Fabric 14	Fabric 14

Fabric 1	Fabric 1
Fabric 2	Fabric 2
Fabric 1	Fabric 1
Fabric 3	Fabric 3
Fabric 4	Fabric 4
Fabric 3	Fabric 3
Fabric 5	Fabric 5
Fabric 6	Fabric 6
Fabric 5	Fabric 5
Fabric 7	Fabric 7
Fabric 6	Fabric 6
Fabric 7	Fabric 7
Fabric 8	Fabric 8
Fabric 9	Fabric 9
Fabric 10	Fabric 10
Fabric 9	Fabric 9
Fabric 11	Fabric 11
Fabric 10	Fabric 10
Fabric 11	Fabric 11
Fabric 12	Fabric 12
Fabric 13	Fabric 13
Fabric 12	Fabric 12
Fabric 14	Fabric 14
Fabric 15	Fabric 15
Fabric 14	Fabric 14