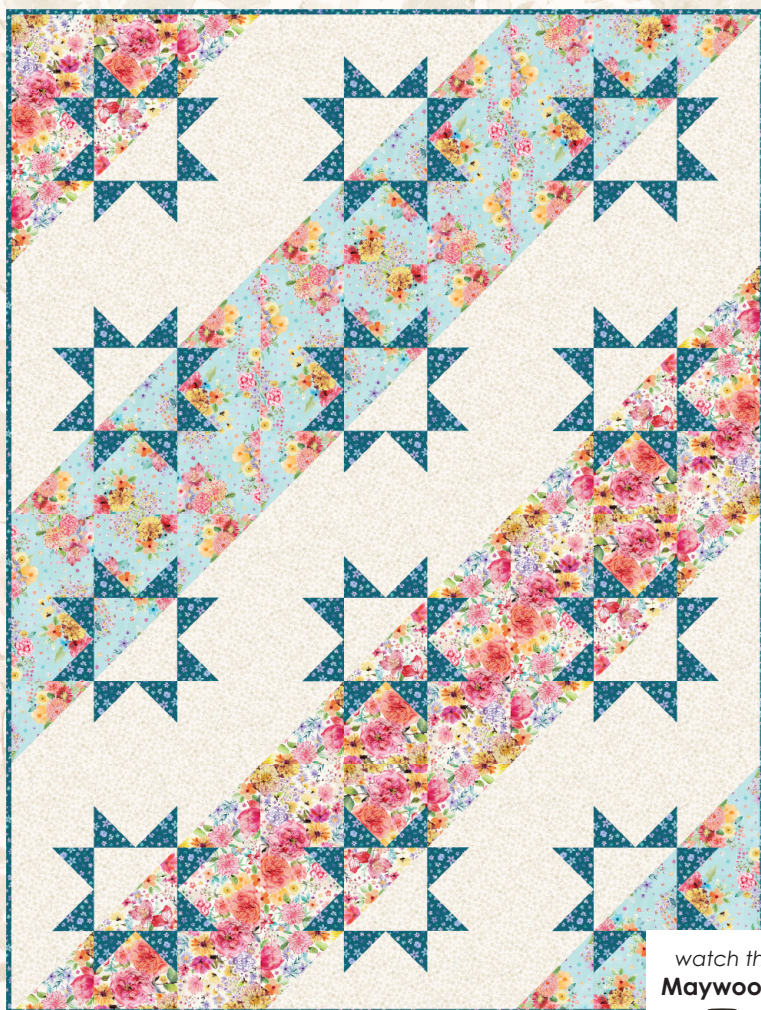


MAYWOOD  STUDIO

# FALLING STARS QUILT



watch the video  
**Maywood Studio**  
 YouTube

## Falling Stars Quilt

Featuring the Nature Studies collection from Maywood Studio

**54" x 72"**

[maywoodstudio.com](http://maywoodstudio.com)

# NATURE STUDIES



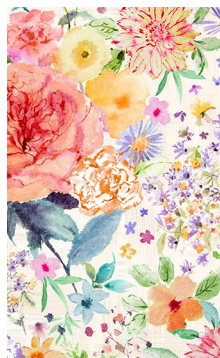
Fabric 1  
10753-E



Fabric 2  
10751-Q



Fabric 3  
10754-Q



Fabric 4  
10750-E



Follow @maywoodstudiofabrics on  
YouTube for more fun tutorials

MAYWOOD STUDIO

Fabric Requirements		
Fabric 1	10753-E	2 yards
Fabric 2	10751-Q	1 yard
Fabric 3	10754-Q	7/8 yard
Fabric 4	10750-E	1 yard
Binding	*shown as Fabric 3	1/2 yard
Backing	45" wide	3.5 yards

Look for the Falling Stars Quilt in other  
Maywood Studio fabric collections.  
[www.maywoodstudio.com](http://www.maywoodstudio.com)



Falling Stars Colorfield Quilt

## Cutting

54" x 72"

### Fabric 1

Cut (4) 7-1/2" x WOF strips into:  
A (18) 7-1/2" x 7-1/2" squares  
Cut (6) 6-1/2" x WOF strips into:  
B (36) 6-1/2" x 6-1/2" squares

### Fabric 2 and Fabric 4

Cut (2) 7-1/2" x WOF strips into:  
C (9) 7-1/2" x 7-1/2" squares  
Cut (3) 6-1/2" x WOF strips into:  
D (18) 6-1/2" x 6-1/2" squares

### Fabric 3

Cut (8) 3-1/2" x WOF strips into:  
E (96) 3-1/2" x 3-1/2" squares

**Binding** \*F3 used in this version  
Cut (7) 2-1/4" x WOF strips. Sew together,  
end to end.

WOF - Width of Fabric  
LOF - Length of Fabric  
RST - Right Sides Together  
HST - Half Square Triangle

Maywood Studio makes every effort to make sure our patterns are accurate.  
Check for updates at [maywoodstudio.com/projects](http://maywoodstudio.com/projects)



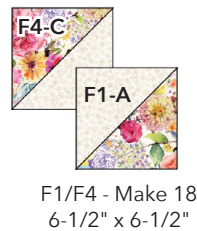
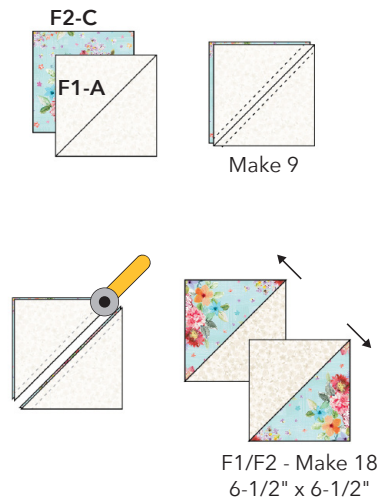
## Falling Stars Quilt Instructions

Please read all instructions before you begin. Seam allowances are 1/4".  
Fabric is abbreviated as 'F' - for example, F1 refers to Fabric 1.

### Half Square Triangles: HST

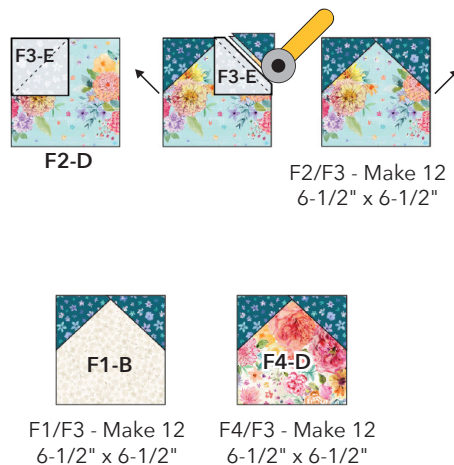
2-at-a-Time HSTs

1. Mark a diagonal line from corner to corner on the wrong side of the F1-A squares.
2. Place an F1-A square, RST (right sides together) over an F2-C square. Sew 1/4" away from either side of the marked line. Press toward F2.
3. Cut apart on the marked line. Square up each unit to 6-1/2". Make 9 for a total of 18 HST units.
4. Repeat steps 2-3 using F1-A and F4-C to make 18 HST units.



### Half Snowball Square: HSS

1. Draw a diagonal line from corner to corner on the wrong side of the F3-E squares.
2. Place an F3-E square, RST over an F2-D square. Sew on the marked line. Cut 1/4" away from the marked line. Press toward F3.
3. Repeat on the opposite side. Make 12.
3. Repeat steps 2-3 to make the following HSS units illustrated to the right:  
(12) F1/F3 HSS units.  
(12) F4/F3 HSS units.



### Sew the Blocks

1. Block A: Arrange the solid squares, F1/F2 Half Snowball Units, and HSTs into rows as shown to the right.

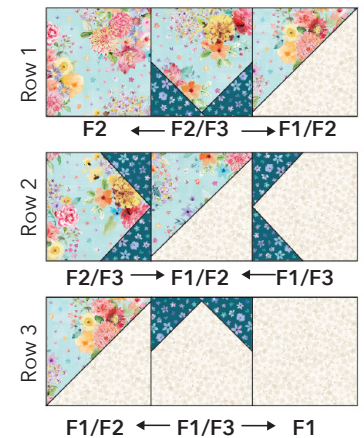
2. Sew together into rows. Press in the direction of the arrows.

Row 1: F2 - F2/F3 HSS - F1/F2 HST  
Row 2: F2/F3 HSS - F1/F2 HST - F1/F3 HSS  
Row 3: F1/F2 HST - F1/F3 HSS - F1

Sew the rows together. Press in the direction of the arrows. Make 6.

3. Block B: Repeat steps 1-2 with the F4 units. Make 6.

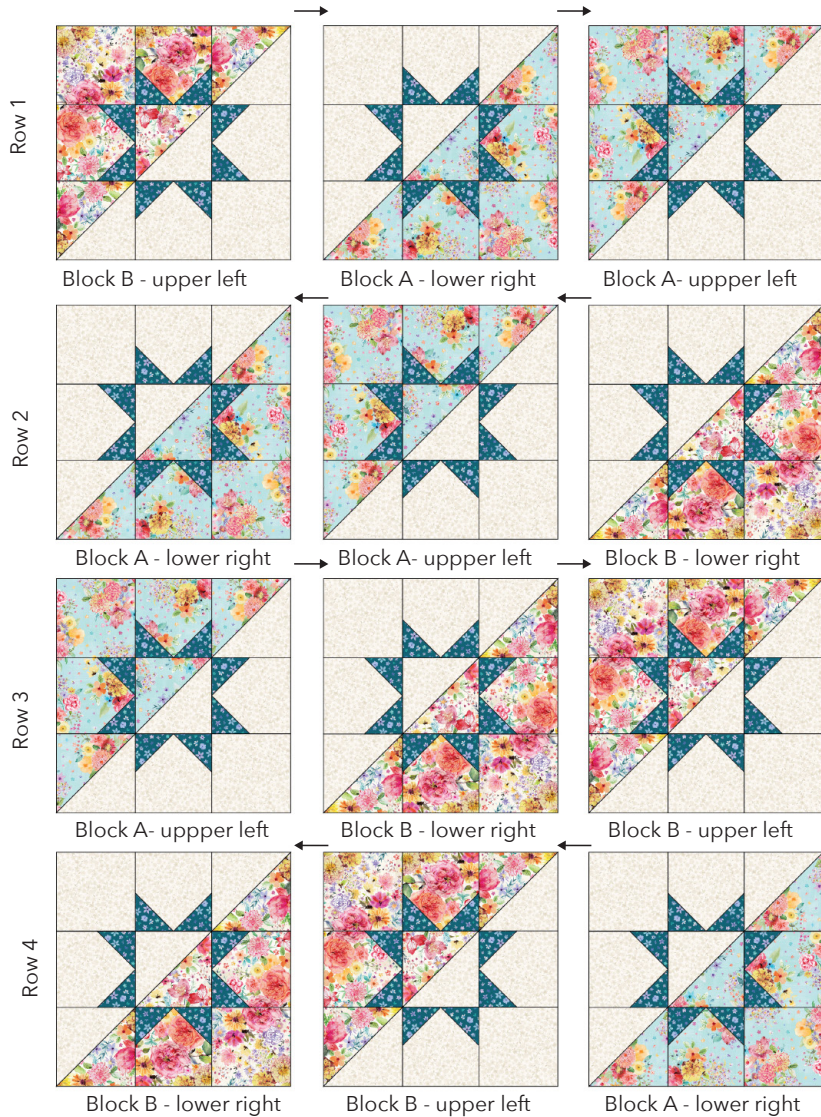
Row 1: F4 - F4/F3 HSS - F1/F4 HST  
Row 2: F4/F3 HSS - F1/F4 HST - F1/F4 HSS  
Row 3: F1/F4 HST - F1/F3 HSS - F1





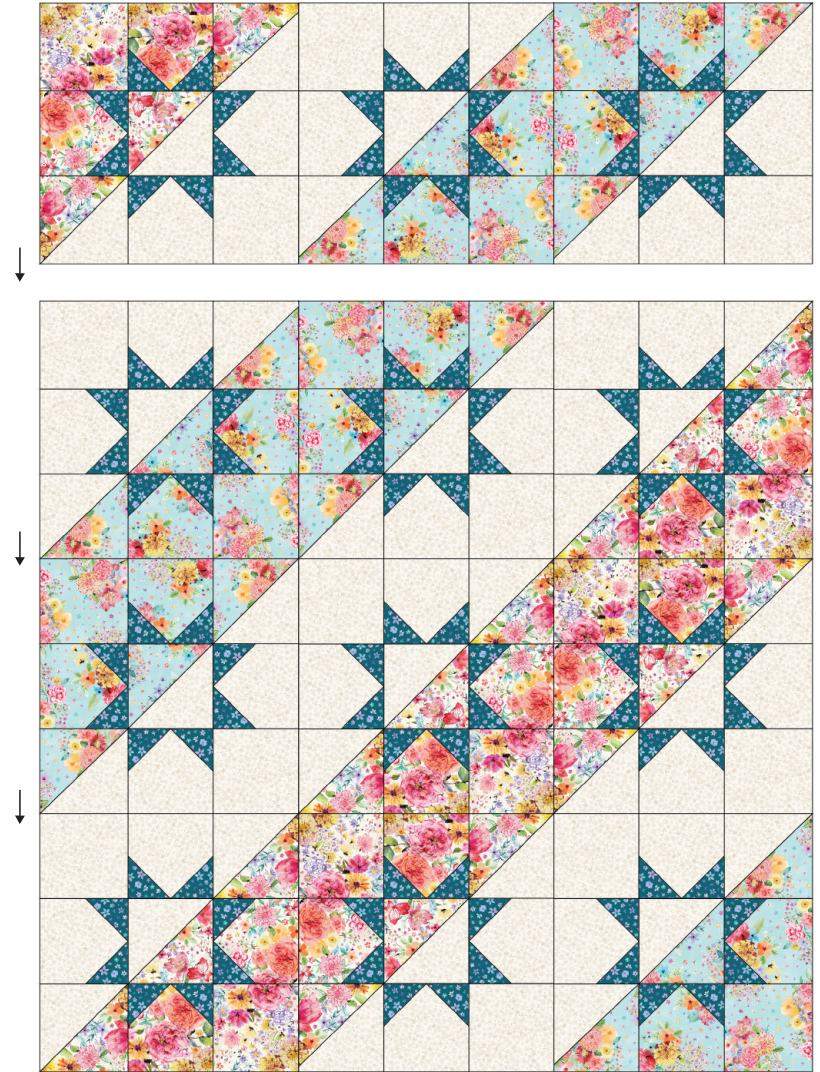
## Row Assembly

1. Lay out the quilt blocks as shown below, rotating the A and B blocks so the F2 and F3 sections are in upper and lower corners as illustrated.
2. Sew blocks into rows. Press rows in opposite directions to nest seams.
3. Sew the rows together. Press in one direction. (Illustration on p.7)



## Finishing

1. Layer the backing (wrong side up), batting and quilt top (right side up). Baste layers to secure. Quilt as desired. Trim the excess backing and batting.
2. Sew the binding strips together into one continuous strip. Press in half length-wise. Sew the binding to the quilt top with a 1/4" seam allowance. Turn the binding to the back side of the quilt and stitch down by hand with matching thread.



## Quilt Planning Diagram

Use this diagram to plan your quilt top.

